

44th Annual  
*The Nutcracker*  
AT STEPHENS AUDITORIUM



Mary Greeley  
MEDICAL CENTER

SATURDAY, DECEMBER 13, 2025 • 1:00PM & 7:30PM

SUNDAY, DECEMBER 14, 2025 • 1:00PM

 Stephens Auditorium  
IOWA STATE UNIVERSITY

 VenuWorks

EVERY DAY FEELS LIKE A  
*Holiday*  
AT GREEN HILLS

Buy one of our unique homes and give yourself the gift of an exceptional lifestyle.



**Call (515) 357-5000 Today!**

Carefree Living • Life-Long Learning  
New Opportunities • Health & Wellness

2205 GREEN HILLS DRIVE AMES, IA 50014 | GREENHILLSRC.COM 

STEPHENS AUDITORIUM PRESENTS THE 44<sup>th</sup> ANNUAL

❄️ ❄️ ❄️ ❄️ ❄️ ❄️ ❄️ ❄️ ❄️ ❄️

# The Nutcracker

❄️ ❄️ ❄️ ❄️ ❄️ ❄️ ❄️ ❄️ ❄️ ❄️

WITH PRINCIPAL DANCERS  
**TANYA LYNN TROMBLY AND MAURICIO VERA NUÑEZ**

---

## ACT I

### SCENE I

Overture  
The Christmas Tree  
March  
Children's Gallop  
Drosselmeyer's Presents  
Drosselmeyer Dance  
Departure of the Guests  
Dance of the Harlequins  
The Magic Spell Begins  
The Battle Between the Nutcracker  
and the Mouse King

### SCENE II

Journey Through the Land of Snow  
Waltz of the Snowflakes

## ACT II

The Kingdom of the Sweets  
Marie and the Prince  
Fairy Godmother and the Angels

### Divertissements

Chocolate  
Coffee  
Tea  
Mother Ginger  
Marzipan  
Cinnamon Sticks  
Candy Canes  
Clover  
Sweet Toffee  
Bon Bons  
Flowers

### Pas de deux

The Cavalier & the Sugar Plum Fairy

### Tarantella

Dance of the Sugar Plum Fairy

### Coda

Final Waltz & Apotheosis

---

### MUSIC

Peter I. Tchaikovsky

### SCENERY

Ronald Steger  
Erica Zaffarano

### ORIGINAL CHOREOGRAPHY

Robert Thomas  
Miyoko Kato Thomas

### ARTISTIC ADVISOR

Robert Thomas

### COSTUMES

Jerri Baumeister  
Gene Bliss  
Esther Hill  
Christi Kampen  
Maureen McGrath  
Ann Olson  
Miyoko Kato Thomas



Supported in part through local option tax funds provided by the City of Ames through the Commission on the Arts

## ACT I

---

### SCENE I

Action takes place in Nuremberg, Germany in the 19th century. Chief Justice Silberhaus and his wife are in the ballroom putting the finishing touches on a beautiful Christmas tree before guests arrive for a party. Marie and Fritz, the children, help greet the guests, and the festivities begin with dances for both the adults and children.

One guest arrives late, Drosselmeyer. Drosselmeyer gives gifts to the children, among them a wooden nutcracker in the form of a soldier for Marie. Fritz wants the doll for himself, and in his struggle to get it the nutcracker is broken. Marie loves and cares for the mended nutcracker. After the guests leave and the children have gone to bed, Marie comes back down to the darkened room to get the nutcracker and falls asleep by her doll.

Suddenly, she is awakened as little mice enter the ballroom and surround her. Drosselmeyer appears as the clock strikes midnight, and sweets and bigger mice enter the ballroom. The sweets have a skirmish with the little mice brigade. As the battle begins, Drosselmeyer tells Marie how the feud between the Nutcracker and the Mouse King began: a

vengeful Mouse Queen, a princess cursed, and a prince who broke the spell with Drosselmeyer's magic nut—only to be cursed himself after accidentally killing the Mouse Queen. The Mouse King then vowed to avenge her.

Marie is transfixed as the Christmas tree and the entire room magically grow to enormous size. An army of mice comes out of the shadows. Marie's nutcracker protects her from the mice and their Mouse King. The ballroom becomes a battleground when a brigade of tin soldiers, cavalry, and dolls, led by the nutcracker, confronts the mice. Marie springs to help, and they finally overcome the mice. The nutcracker turns into a handsome young prince. To thank Marie, the Nutcracker Prince invites her on a beautiful journey through the Land of Snow to the Kingdom of the Sweets.

### SCENE II

On their way to Kingdom of the Sweets, Marie and the Nutcracker Prince pass through a great snowstorm with dancing snowflakes whirling around them.

## ACT II

---

### SCENE I

The delectable Sugar Plum Fairy, who orders a festival in Marie's honor because she helped save the Prince, welcomes Marie and the Nutcracker Prince to the beautiful Kingdom of the Sweets. With little angels in attendance, the people of the Kingdom dance for Marie. The Chocolate, Coffee, Tea, Mother Ginger and her children, Marzipan, Cinnamon Sticks, Candy Canes, Clover, Sweet Toffee and Bon Bons perform their own special dances in the grand celebration.

Even the Flowers dance in this enchanted fairyland. The festival concludes with the Sugar Plum Fairy and her Cavalier paying homage to Marie and the Nutcracker Prince.

### EPILOGUE

Back in the ballroom, Mother and Father find a sleeping Marie and carry her back to bed. It has all been a dream... or has it?



**SMARTENERGY**  
USING RESOURCES RESOURCEFULLY

**LOCAL.  
RELIABLE.  
DEPENDABLE.**



Ames Electric Services has been powering Ames homes and businesses since 1896. We are your local, reliable, dependable energy source. While we work hard to ensure electricity is always available, sometimes the weather, equipment malfunction, or accidents cause an outage. When that happens, we want you to be prepared.

**POWER  
OUT?**



Call or text 515.239.5240 to report your power outage. Your address helps us pinpoint the problem and fix it quickly.

*Helpful tip: Save this number in your phone now! 😊*



CITY OF  
**Ames**<sup>™</sup>  
ELECTRIC SERVICES

**AMES ELECTRIC SERVICES, 200 E. FIFTH ST. • 515.239.5170**  
For more information on Electric, Smart Energy, Rebates and more visit: [www.CityOfAmes.org/Electric](http://www.CityOfAmes.org/Electric)

# CAST

---

## ACT I, SCENE I

### JUSTICE SILBERHAUS

Chris Truckenmiller

### FRAU SILBERHAUS

Ronna McGrann

### MARIE

Quinn Kahnk, SaE  
Caroline Lopez, Sun  
Harper Watson, SaM

### FRITZ

Charles Bethel, SaE  
Keaton Myers, SaM  
Kallie Williams, Sun

### MAIDS

Jordyn Calaway  
Genevieve Claussen, SaM/  
Sun  
Madelyn Grothus  
Elizabeth Hensley, SaE/Sun  
Brynnlee Schwegler, SaM/  
SaE

### MARIE'S LITTLE FRIENDS

Penelope Cuneo, SaM  
Rose Gould, SaE/Sun  
Alice Ihle, SaM  
Kaci Janorschke, SaE/Sun  
Winnie Linder, SaE/Sun  
Mia McGrann, SaM  
Afton McKnight, SaM  
Annabel West, SaE/Sun

### MARIE'S BIG FRIENDS

Hannah Canuso  
Abigail Haila  
Hazel Hensley, Sun  
Quinn Hibbing, SaM/SaE  
Piper Linder  
Camille Sankey  
Camy Swanson

### FRITZ'S FRIENDS

Charles Bethel, SaM/Sun  
Odin Gibson  
Tyson Hodges  
Caroline Lake  
Odi Li  
Keaton Myers, SaE/Sun

Aurora Roepke  
Leo Schaefer  
Huxlee Schwegler  
Eva Shaull  
Kallie Williams, SaM/SaE

### FEMALE PARTY

#### GUESTS

Angela Carl, SaE/Sun  
Billie Glenn, SaM  
Katharine Hensley  
Jenna Levendusky, SaM  
Kristin Peyton Strohman,  
SaE/Sun  
Gretchen Schaefer, SaE/Sun  
Kerry Smith  
Sarah Soriano, SaM

### MALE PARTY GUESTS

Patrick Determan  
Richard Firmstone, SaE/Sun  
Ted Frandson, SaM  
Barry Green, SaE/Sun  
Dave Roepke, SaM  
Jacob Smith  
Bryan Willer, SaE/Sun  
Brandon Windus, SaM

### DROSSELMEYER

Wendy Leopold

### APPRENTICES

Lauren Kooistra  
Amelia Overman

### BALLERINA DOLLS

Olivia Patterson, SaE  
Lindsey Robinson, Sun  
Giana Soriano, SaM

### RAGGEDY ANN DOLLS

Ridhima Das, Sun  
Luciana Ellett, SaM  
Peyton Faust, Sun  
Maddie Janes, Sun  
Logan Lande, SaM  
Emery Osmundson, SaM  
Audree Pantenburg, SaE  
Finley Schaefer, SaE  
Natalie Tapper, SaE

### MOOR DOLLS

Mary Bresnahan, SaM  
Libby Carl, Sun  
Brianna Tjaden, SaE

### HARLEQUINS

Naomi Borton, SaE/Sun  
Isla Ewing, SaM  
Sloane Kahnk, SaE/Sun  
Willow Kooistra, SaM  
Brynn Lott, SaM  
Rylan Maxwell, SaE/Sun  
Haylee Bob Pargmann  
Lydia Perry  
Sabrina Schaufenbuehl  
Payslee Schwegler, SaM  
Onnalee Shaull, SaE/Sun  
Teagan Thurston  
Aurora Westrum, SaM  
Claire Zhou, SaE/Sun

### MICE

Janelle Allman  
Kaitlin Berei  
Cati Durr  
Sophie Elsberry  
Ella Gorman  
Maddie Janes  
Madeline Rabe  
Lindsey Robinson  
Finley Schaefer  
Brooklyn Sievers  
Jamie Tamashunas  
Willow Yager

### LITTLE MICE BRIGADE

Sally Boyd  
Victoria Buss  
Emmy Cunningham  
Charlee Grimm  
Zoey Leo  
Jadyn Russell  
Halston Williams

### SWEETS

Angelia Biswas  
Sutton Boldt  
Brylie Boucher  
Maria Boyd  
Norah Cregeen  
Charleigh Green  
Gia Hiveley

## **NUTCRACKER**

Yasha Mendelev

## **MOUSE KING**

Noelle Kibbe

## **FIRST LIEUTENANT**

Charlotte Lake

## **SOLDIERS**

Charles Bethel  
Isaiah Borton  
Odin Gibson  
Mylah Harness  
Tyson Hodges  
Wally Iverson  
Avery Lott  
Claire McCarty  
Keaton Myers  
Molly Myers  
Hattie Rooney  
Emery Rosado  
Leo Schaefer  
Lizzie Westrum  
Kallie Williams

## **CAVALRY**

Iva Fagervik  
Hannah McIntosh  
Emery Osmundson  
Audree Pantenburg

## **BATTLE SCENE DOLLS**

Clara Govias  
Olivia Hamann

## **ACT I, SCENE II**

## **SNOWFLAKES**

Kelsey Allman  
Brinley Battles  
Mary Bresnahan  
Libby Carl  
Julia Fangmann  
Grace Janes  
Kya Lutterman  
Liza Mendelev  
Brooklyn Miller  
Everlie Mitchell  
Quinnlyn Myers

Olivia Patterson  
Giana Soriano  
Brianna Tjaden  
Raquel Wolf  
Harmony Wong

## **ACT II, SCENE I**

## **FAIRY GODMOTHER**

Mary Bresnahan, SaM  
Grace Janes, Sun  
Liza Mendelev, SaE

## **ANGELS**

Brynn Baier, SaM  
Ivy Bierbaum, SaE/Sun  
Addyson Emery, SaE/Sun  
KayLynn Fevold, SaM  
Gwenyth Frerichs, SaE/Sun  
Kate Hackbart, SaE/Sun  
Kate Hemken, SaM  
Hazel Hensley, SaM  
Ellie McCutcheon, SaE/Sun  
Alexandra Moore, SaE/Sun  
Dinah Pistorius, SaM  
Elsa Rabe, SaE/Sun  
Iyla Rossmannith, SaM  
Everly Smith, SaM  
Finley Williams, SaE/Sun  
Hanshu Zhang, SaM

## **CHOCOLATE**

Kelsey Allman  
Camryn Damge  
Evelyn Damge  
Julia Fangmann  
Logan Lande  
Harmony Wong

## **COFFEE**

Brinley Battles  
Grace Ann Frandson  
Brooklyn Miller  
Everlie Mitchell  
Neve Sprecher

## **TEA**

Janelle Allman  
Ridhima Das  
Cati Durr  
Sophie Elsberry

## **TEA (CRICKET)**

Yasha Mendelev

## **MOTHER GINGER**

Bill Williams

## **MOTHER GINGER BIG KIDS**

Zoey Firmstone  
Hadley Hansen  
Lena Huedepohl  
Elisabeth Pickett  
Cecelia Pistorius  
Addison Price  
Charlotte Sloan

## **MOTHER GINGER**

## **LITTLE KIDS**

Elsie Claussen  
Delilah Coulter  
Zoey Faeth  
Vera Huedepohl  
Vivienne Perry  
Evelyn Sullivan

## **MARZIPAN**

Brinley Battles  
Kya Lutterman  
Everlie Mitchell  
Quinnlyn Myers  
Olivia Patterson

## **CINNAMON STICKS**

Camryn Damge  
Evelyn Damge  
Daniel Kellen  
Gretchen Schaefer  
Katharine Young

## **CANDY CANES**

Janelle Allman  
Kelsey Allman  
Brinley Battles  
Mary Bresnahan  
Libby Carl  
Ridhima Das  
Cati Durr  
Sophie Elsberry  
Julia Fangmann  
Grace Ann Frandson  
Grace Janes

# CAST

SaM - Saturday 1:00 pm Performance; SaE - Saturday 7:30 pm Performance;  
Sun - Sunday 1:00 pm Performance

Quinnlyn Myers  
Neve Sprecher  
Brianna Tjaden  
Raquel Wolf  
Harmony Wong

Mackenzie Ricken  
Danslee Schwegler  
Mariel Soriano  
Neve Sprecher  
Natalie Tapper

Giana Soriano

## FLOWER SOLOISTS

Everlie Mitchell  
Quinnlyn Myers

## CLOVER

Charles Bethel  
Addy Danielson  
Zoey Firmstone  
Evalyn Gorshe  
Logan Gorshe  
Lyla Kruse  
Serica Maiers  
Annasophia Opheim  
Kelsey Robinson  
Hope Rooney  
Jocelyn West  
Michaela West  
Anessa Yoder-Stoullil

## BON BONS

Kelsey Allman  
Libby Carl  
Yasha Mendeleev  
Brianna Tjaden  
Raquel Wolf

## DEW DROP FAIRY

Grace Ann Frandson

## FLOWERS

Janelle Allman  
Genevieve Claussen  
Cati Durr  
Elizabeth Hensley  
Maddie Janes  
Noelle Kibbe  
Charlotte Lake  
Claire McCarty  
Lindsey Robinson  
Finley Schaefer  
Brynnlee Schwegler

## SWEET TOFFEE

Hadley Hansen  
Brooklyn Miller  
Moirra Moon



**MAKE AN IMPACT**

**IN YOUR COMMUNITY**

**BECOME A HOST HOMES MENTOR.**

**Provide personalized care for an  
Iowan with disabilities from the  
comfort of your home.**

LSI Host Homes mentors earn an  
average of \$70,000 a year.

**Contact us to take a  
new step in your career!**

515.400.7718 | [April.Porter@LSIowa.org](mailto:April.Porter@LSIowa.org)



[LSIowa.org/HostHomes](http://LSIowa.org/HostHomes)

**WINDSOR OAKS**  
*Retirement Community*



1100 Adams St., Ames

**515-233-0383**

[www.WindsorOaksSeniors](http://www.WindsorOaksSeniors.com)

**Senior Living with Independence and  
Choice... Celebrate the Seasons in our beautiful setting.  
Spacious 1 and 2 bedroom apartments with  
three season porches, garages, maintenance  
and more.**



# OLLI

AT IOWA STATE UNIVERSITY™

First Friday Coffee



**STAY CURIOUS • ACTIVE • ENGAGED**  
*Lifelong Learning for Adults*

OLLI at ISU provides non-credit learning opportunities designed for older adults. Anyone can join to participate in a variety of courses and social experiences offered in-person, online, or as a combination of both.



Learn more at  
[olli.iastate.edu](http://olli.iastate.edu)

Follow us on Facebook:  
[@OlliAtISU](https://www.facebook.com/OlliAtISU)

## ARTISTIC ADVISOR & ORIGINAL CHOREOGRAPHERS

---



**Miyoko Kato Thomas** (1943-2022) received her extensive ballet training at the Tachibana Ballet School of Tokyo in her native Japan. In 1964, she came to study at the American School of Ballet (School of the New York City Ballet). A year later, she signed with the Harkness Ballet Company and was promoted to the rank of Soloist in 1969. With the Harkness Ballet, Miyoko performed in the White House and toured Europe, the Middle East, North Africa, and throughout the United States.

Miyoko joined the Joffrey Ballet in 1974. She performed leading roles in works ranging from classical ballets such as *Swan Lake*, *Coppélia*, *Giselle (Queen of the Willis)*, *The Nutcracker*, *Don Quixote*, *Les Sylphides*, *Raymonda*, *Pas des Quatre*, and *The Firebird* to modern ballets and jazz. She worked with numerous choreographers including Antony Tudor, Jerome Robbins, Agnes DeMille, Alvin Ailey, Twyla Tharp, Robert Joffrey, Gerald Arpino, and Jack Cole. Among the highlights of her career was a performance for President Johnson at the White House in 1965. In 1966, Miyoko toured Europe, North Africa, and the Middle East under the sponsorship of the U.S. State Department.

**Robert Thomas**, an Iowa native, studied dance in Iowa until 1964. In the summer of 1964, Robert received a dance scholarship to Ted Shawn's Jacob's Pillow in Lee, MA. From

the summer of 1964-1967, Robert retained a position in the highly competitive Harkness Ballet trainee program in New York City.

In 1967, Robert joined the Harkness Ballet of New York. With the Harkness Ballet, Robert toured the United States, Europe, and the Middle East. When the first Harkness company disbanded in 1969, Robert was offered a position with the Stuttgart Ballet, the National Ballet Contemporair, the Joffrey Ballet, the Geneva Ballet, and the second Harkness company. Accepting a position with the Joffrey Ballet, Robert performed in New York, throughout the United States, Europe, and Russia. Robert was a guest artist with the André Eglevesky Ballet Co., Lar Lubovitch Dance Co., Jack Cole, and Stuart Hodes Close-Ups. Robert performed in more than 70 major works which included ballets by choreographers such as Ailey, Arpino, Balanchine, Boris, Cole, Cranko, Folkine, Harkarvey, Hodes, Joffrey, Lubovitch, Massing, Neumeier, Petipa, Rivera, Saddles, Sappington, Severs, Van Dancing, Walker, and Willied. Robert appeared in a variety of media from opera and stage to television. From 1984-1986, Robert was Assistant Ballet Master to the Joffrey Ballet.

Robert Thomas married Miyoko Kato Thomas in 1971. Robert and Miyoko opened the Robert Thomas Dancer in Ames in 1978. In addition to operating the studio, they helped establish the award-winning Dancer Dancers, the Iowa Youth Ballet, and the Irish Performance Team. In more than 45 years of dance instruction, Robert Thomas Dancers have trained more than 10,000 young dancers.

In 1981, Robert and Miyoko choreographed and assisted in the creation of Stephens Auditorium's *The Nutcracker*. They served as artistic directors each year.

Robert still owns and operates the Robert Thomas Dancer and continues to serve as Artistic Advisor of *The Nutcracker*. Robert remembers Miyoko every day, as he carries on the legacy that they built together.

## PRINCIPAL DANCERS

## Sugar Plum Fairy & Her Cavalier

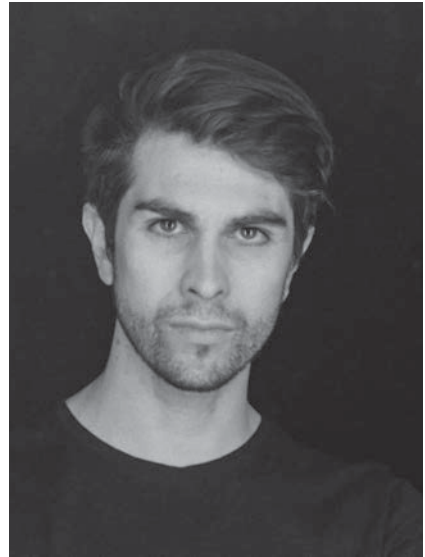


Originally from Michigan, **Tanya Lynn Trombly** holds a B.A. from Mercyhurst University in Erie, PA. She danced with several professional companies across the country before settling in New York City to work as a freelance artist, where she has performed principal roles in *Swan Lake*, *Beauty & the Beast*, *Cinderella*, *Sleeping Beauty*, *The Little Mermaid*, and many more classical & original contemporary works.

Tanya has experience as the Creative Director and Co-Founder/Producer of a touring company that performed in Denver and Vail, Colorado, and premiered its first full-length performance in NYC in June 2024.

She is also the founder and creator of the patented Bulletproof Ballerina cross-training system. Through fitness, nutrition, and lifestyle coaching, she works with dancers to help them reach their true potential as artists. She loves traveling to teach master classes and was an Adjunct Professor at Johns Hopkins University – Peabody Institute for a body conditioning course for the BFA Dance program.

More information at [BulletproofBallerina.com](http://BulletproofBallerina.com).



**Mauricio Vera Nuñez**, a Chilean freelance dancer based in Tribeca, Manhattan, began his studies in 1998 at Ballet de Santiago in Chile, under the direction of Patricio Gutierrez and the company artistic direction of Ricardo Bustamante and Marcia Haydée.

During his five years with Ballet de Santiago, he also had the opportunity to participate in several South American TV productions. In 2006, he continued his studies at The National Ballet of Cuba with Alicia Alonso in Havana, Cuba.

Mauricio has trained and worked with: Nancy Bielsky, David Howard, Leslie Brown, and Mijaela Tesleoanu at Ballet Nacional de Cuba. He has also worked with the following choreographers: Marcia Haydée, Maurice Béjart, Ivan Nagy, Ronald Hynd, Andre Prokofiev, Edgar Zendejas, William Soleau, and danced the choreography of J. Cranko, G. Balanchine, Sir K. MacMillan, and Vicente Nebrada, among others. He has performed internationally in Germany, Argentina, Cuba, China, Uruguay, Canada and has danced as a guest principal dancer all over the USA.

You can connect with Mauricio on Instagram at [@mauriciovera](https://www.instagram.com/mauriciovera).

## ABOUT THE COMPOSER

---



**Peter Ilyitch Tchaikovsky** was born May 7, 1840. The son of a mining inspector, Tchaikovsky was brought up well. He received music lessons as a child, but none of his teachers discerned any signs of genius.

As a young man, he studied law and entered a civil service position with the government. Tchaikovsky did not take up music seriously until the age of 22. He entered the newly opened St. Petersburg Conservatory as a student of Zaremba and A. Rubinstein. He resigned his government position and supplemented his finances by teaching ill-paid music lessons.

Tchaikovsky composed his first work in 1865, an overture to Ostrovsky's *The Storm*. From there, he went on to teach at the new conservatory established in Moscow and his creative career progressed rapidly. He traveled extensively composing operas, symphonies, and ballets.

A year after he composed *The Nutcracker*, Tchaikovsky fell victim to the cholera epidemic that swept through St. Petersburg; he died November 6, 1893. This eminent Russian composer left a legacy of music that commands a deep and permanent hold on music lovers everywhere.

---



**STARK SMILES**  
ORTHODONTICS

**Meet the Stark Duo:  
Creating a Legacy of Smiles**

THOMAS STARK, D.D.S., M.S.D.  
MICHAEL STARK, D.D.S., M.S.D.

1212 Duff Avenue, Ames, IA  
50010  
515-232-2255 | 888-402-2255

# THE NUTCRACKER INSTRUCTORS

---



(Left to Right) Wendy Leopold, Addy Danielson, Serica Maiers, Mary Behn-Mentzer, Eva Kellen

Not pictured: Maureen McGrath

## Building the Future, Honoring the Past

Over 35 years of Timeless Aesthetics and Craft

- Remodels and Additions
- New Home Construction
- Architectural Drawings
- Interior Design Services
- Custom Cabinets
- Bespoke Furniture
- Energy Efficiency Audits
- Lumber Milling/Drying



**I**OWA HOME CRAFTERS  
Design + Build

office@iowahomecrafters.com  
515.292.5274  
IowaHomeCrafters.com

# PRODUCTION STAFF

---

Producer ..... Tammy Koolbeck  
Choreographed & Staged by ..... Iowa Youth Ballet  
Artistic Advisor ..... Robert Thomas  
Assistant to the Advisor ..... Kimberly Kellen  
Original Production Choreography, Act I ..... Robert Thomas  
Original Production Choreography, Act II & Snow ..... Miyoko Kato Thomas  
Act I Party Scene Staged by ..... Eva Kellen, Wendy Leopold, Serica Maiers  
Act I Battle Scene Choreographed by ..... Maureen McGrath  
Rehearsal Assisted by Kelsey Allman, Mary Bresnahan, Everlie Mitchell, Brianna Tjaden  
Act I Snow Staged by ..... Wendy Leopold  
Harlequins & Chocolate Staged by ..... Eva Kellen  
Angels, Mother Ginger, Marzipan, Bon Bons & Flowers Staged by ..... Wendy Leopold  
Cinnamon Sticks Staged by ..... Serica Maiers  
Choreography for Maids ..... Eva Kellen, Wendy Leopold  
Choreography for Candy Canes, Coffee & Tea ..... Maureen McGrath  
Choreography for Flowers ..... Lisa Luiken-Woxell  
Choreography for Clover ..... Addy Danielson, Serica Maiers  
Choreography for Sweet Toffee ..... Mary Behn-Mentzer  
Rehearsal Assistant for Candy Canes & Tea ..... Everlie Mitchell  
Rehearsal Assistant for Candy Canes, Cinnamon Sticks, Tea & Sweet Toffee ..... Eva Kellen  
Costumer ..... Jerri Baumeister  
Costume Assistant ..... Christi Kampen  
Backstage Coordinator ..... Lisa Davis  
Technical Director ..... Mike Broich  
Stage Manager ..... Darren Geil  
Lighting, Set Construction & Painting, Technical Support Staff .... Iowa State Center Tech Staff  
Audio ..... Chris Campbell  
Logistics and Social Media Coordinator ..... Savannah Wiese

thank  
you

A special thanks to all the dancers, parents, friends, volunteers, dance studios/centers, and Stephens Auditorium full- and part-time staff who make this annual production of *The Nutcracker* possible!

# SUGAR, SPICE, AND EVERYTHING MICE!



CHOCOLATERIE STAM • FINE EUROPEAN CHOCOLATES SINCE 1913



Spend \$20,  
Get a **FREE**  
White Mouse

230 MAIN ST. AMES • (515) 232-0656 • [stamchocolate.com](http://stamchocolate.com)

Present this coupon to redeem



## People from throughout central Iowa turn to Mary Greeley Medical Center for outstanding care.

- Services include Behavioral Health, Cancer Care, Cardiology, Diabetes Care, Gastroenterology, Surgical Care, Home Health & Hospice, Obstetric Care, Orthopedics, Pulmonary, Pediatrics, Physical Therapy and Urology.
- More than 190 medical professionals who have expertise in 50 specialties and sub-specialties.
- More than 1,300 nurses, patient care technicians, therapists and other clinical and non-clinical positions.
- A comfortable healing environment with spacious patient rooms.
- Recognized by the Malcolm Baldrige National Quality Award, the nation's highest honor for performance excellence, and Magnet, the highest honor for nursing quality.

Learn more about Mary Greeley and the services we offer at [www.mgmc.org/Ames](http://www.mgmc.org/Ames)